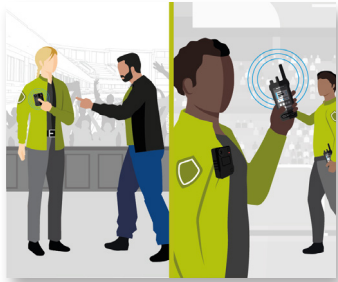


USE CASE ESCALATED FAN INTERACTION

Safe Stadiums



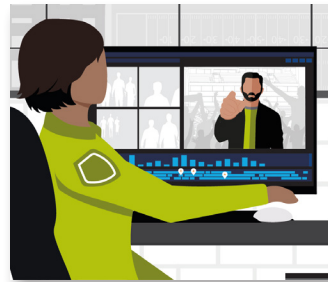
Operational View



DETECT

DISRUPTIVE FAN REPORTED

A staff member interacts with a disruptive individual and activates their body-worn camera to begin recording. An alert is automatically sent to appropriate staff directly on their device of choice and in the command center.



ANALYZE

SITUATIONAL INTELLIGENCE GATHERED

The operational command center receives the alert and all relevant camera feeds are populated and body-worn camera footage is live streamed. Other nearby security resource locations are identified.



COMMUNICATE

RESOURCES DISPATCHED

Security teams are dispatched to the situation and receive intelligence including an image of the disruptive guest prior to their arrival on scene.



RESPOND

SITUATION CONTAINED AND MITIGATED

The individual is escorted off the premises and an incident report is then securely documented with all relevant data.

Technology View



DETECT

- Body-worn Cameras
- Orchestrate



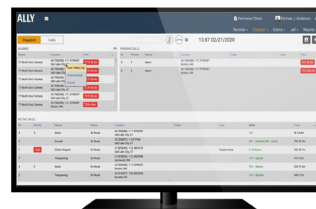
ANALYZE

- Avigilon Control Center
- Body-worn Cameras
- CommandCentral Aware Enterprise



COMMUNICATE

- Radio Communications: Voice & Multimedia
- WAVE PTX: Multimedia Sharing & Broadband Push-to-Talk
- Avtec Dispatch Console



RESPOND

- Ally Incident Management



Motorola Solutions, Inc. 500 West Monroe Street, Chicago, IL 60661 U.S.A. [motorolasolutions.com](https://www.motorolasolutions.com)

MOTOROLA, MOTO, MOTOROLA SOLUTIONS and the Stylized M Logo are trademarks or registered trademarks of Motorola Trademark Holdings, LLC and are used under license. All other trademarks are the property of their respective owners. © 2021 Motorola Solutions, Inc. All rights reserved. 12-2021 [LD04]

*Camera footage is for illustrative purposes only